

Senior Project

Alyssa Oliveira, Luke Stefanchik, and Lizbeth Perez

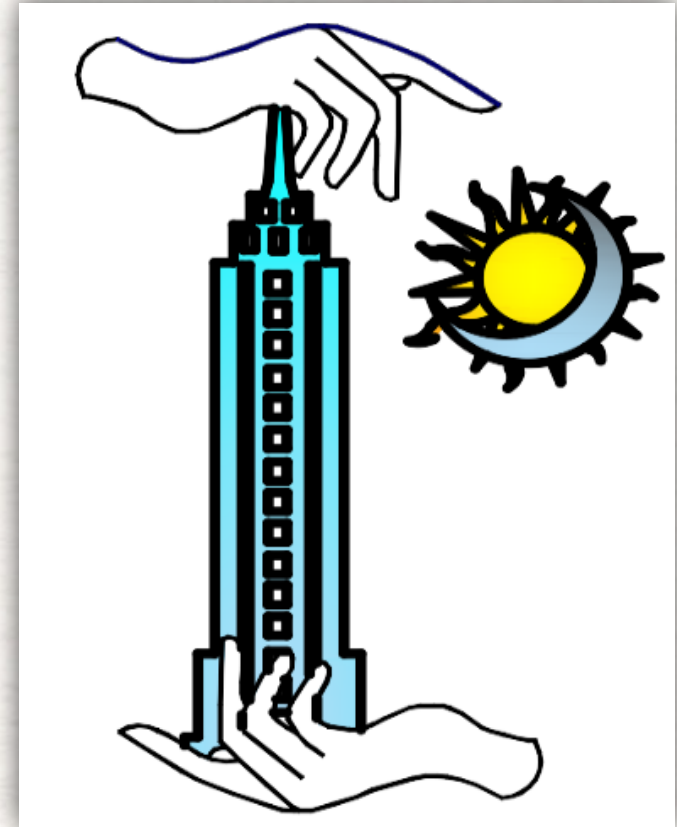
May 22, 2020

Arch. 12

C. Mitrione

ethereal designs

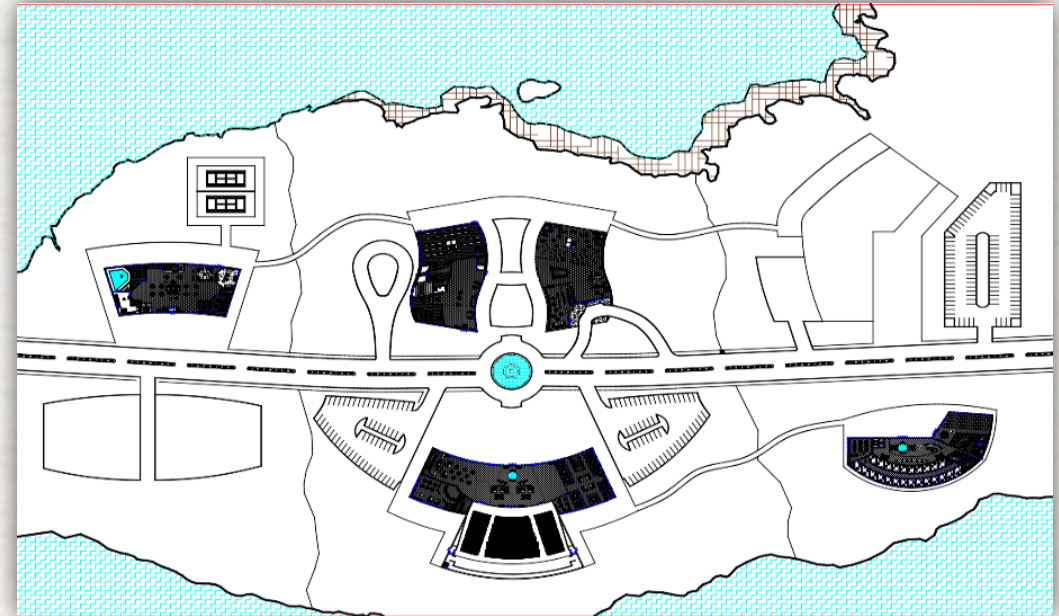
3 Van Deren Terrace
Bronxville, New York 10708
(914) – 378 – 8642
ethereal designs.com
Business Inquiries –
info@ethereal designs.com



ethereal designs presents:

YOU NEVER WALK ALONE (YNWA)

The YNWA Foundation will be a sprawling campus dedicated to providing shelter, rehabilitation, and educational / career opportunities for homeless LGBTQ+ youth. This facility will stretch across a peninsula on Lake Pickett in Orlando, Florida.



conceptual drawing courtesy of ethereal designs

YNWA Design Team



Alyssa Oliveira - Superimposed buildings onto model, designed roads and pathways using GIMP editing software.



Luke Stefanchik - Found precedent buildings via Google Earth to use for model, compiled virtual open house presentation.



Lizbeth Perez - Cropped images of precedent buildings to be inserted onto model using the Superimpose app.

Why LGBTQ?

According to the Human Rights Campaign, a 2017 report from the University of Chicago found that LGBTQ youth were at a 120% higher risk of homelessness than cisgender, heterosexual youth.

Additionally, research by True Colors United, an organization dedicated to helping young LGBTQ people in the United States, found that LGBTQ youth comprise 40% of the American youth homeless population, despite comprising only 7% of the general youth population.

Furthermore, according to the Prison Policy Initiative, a 2015 study concluded that 20% of youth in the American juvenile detention system identify as LGBTQ. Clearly, homelessness is a much bigger issue for LGBTQ+ youth, likely due to being kicked out of their homes for who they are.



Why Orlando?

According to a 2012-2014 Gallup report, of the fifty largest metropolitan areas in the United States, the Orlando – Kissimmee – Sanford, Florida metro area has the twentieth-highest percentage of LGBT people in the population, at 4.1%.

Furthermore, Orlando's year-round warm weather allows for plenty of outdoor activities, seating areas, and walking paths, and promotes better sleep, lower blood pressure, less stress, better mood, etc.



The YNWA Campus

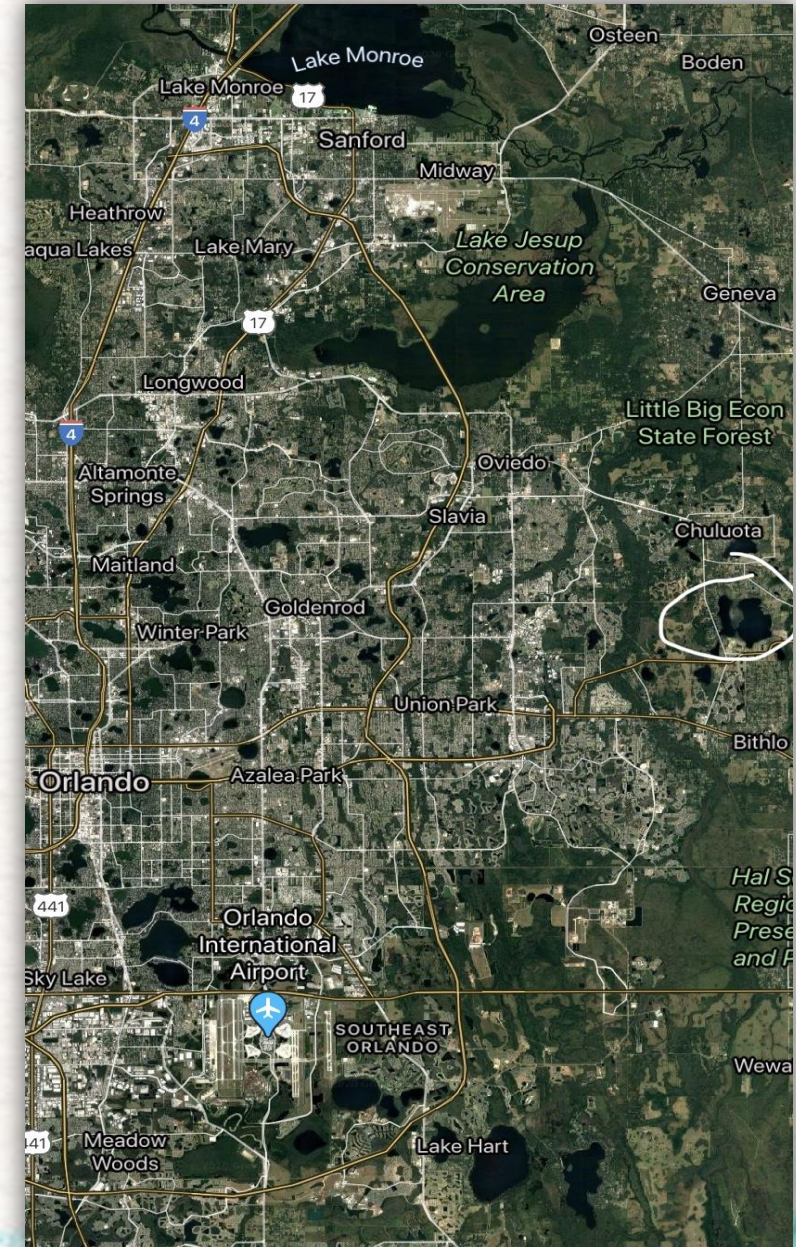


Lake Pickett in Orlando, Florida

Location

The YNWA Campus will be located on Lake Pickett, about a twenty-five - minute drive from the Downtown Orlando area, and close to State Highways 420 & 50 as well as County Road 419.

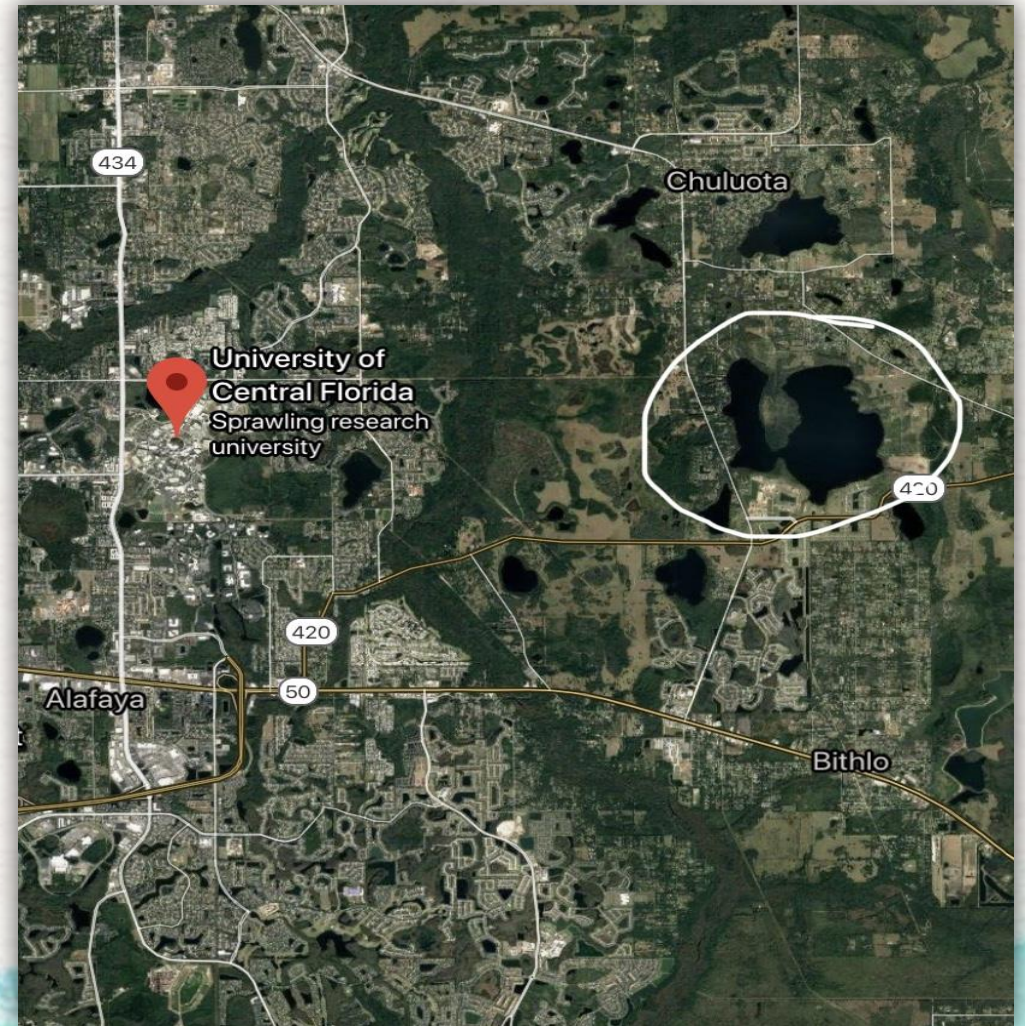
At right, Lake Pickett's location in relation to Downtown Orlando and Orlando International Airport.



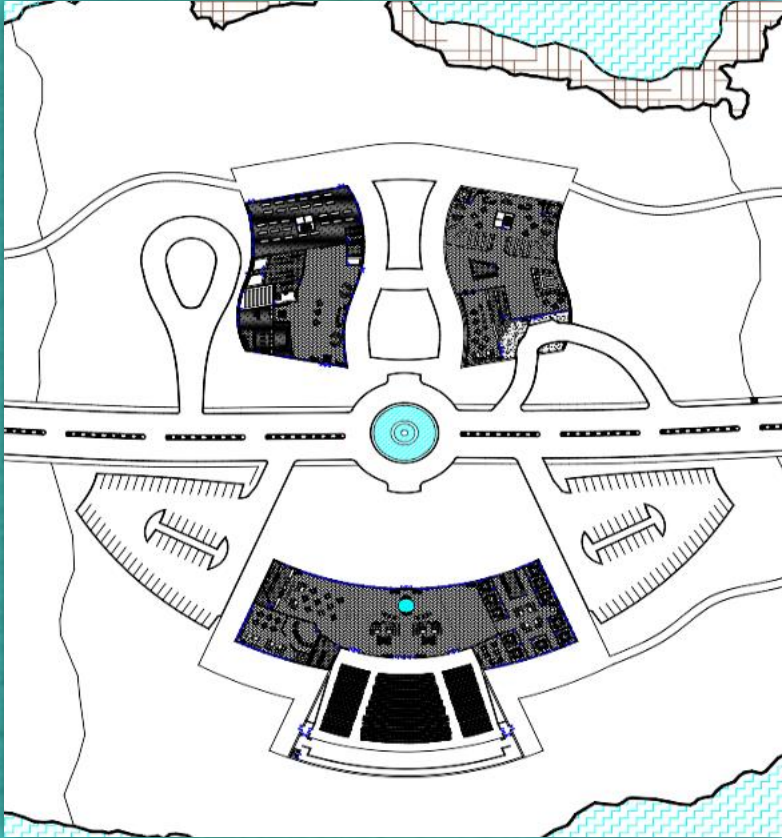
UCF Partnership

Another benefit of the YNWA Foundation's campus location will be its partnership with the University of Central Florida. With this partnership, UCF will be offering free college courses to any YNWA resident, ranging from general studies to introductory courses in Forensic Science and Aerospace Engineering. Additionally, YNWA residents will have free access to UCF's libraries, athletic fields, recreation center, and arboretum. A complementary shuttle bus will transport residents between the YNWA and UCF campuses. Go Knights!

At right, Lake Pickett's location in relation to the UCF campus.



*conceptual drawing courtesy of
ethereal designs*



*Building One designed by Lizbeth
Perez*

*Buildings Two and Three designed
by Alyssa Oliveira*

Main Buildings

At top left, Building One will house:

- A common area
- A post office
- The main cafeteria

At top right, Building Two will house:

- A café
- UCF Shuttle Bus station
- The campus library

At bottom, Building Three will house:

- The welcome center
- A coffee shop
- Administrative offices
- The Audre Lorde Memorial Auditorium

Note: Every building on the YNWA campus will include a security office, storage space, custodial closets, and gender-neutral restrooms.

conceptual drawing courtesy of ethereal designs



Building Four designed by Lizbeth Perez

Dormitory Building

Building Four's first level will house:

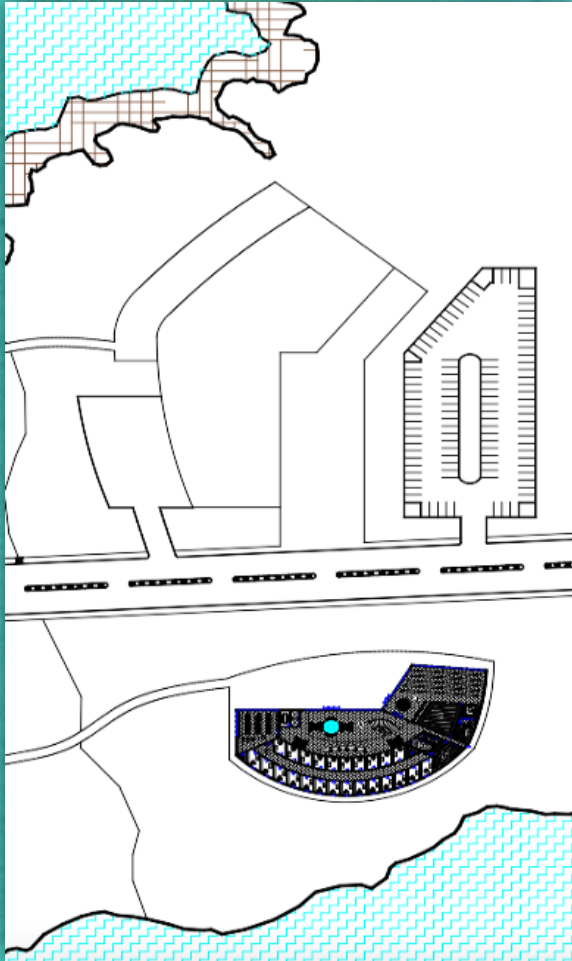
- A coffee shop
- A study lounge
- A game room
- A computer lab
- A fitness center
- An indoor pool
- A common area
- Outdoor tennis courts

Building Four's upper levels will house:

- Dorm rooms that sleep up to two residents each
- One laundry room per floor
- One restroom per floor, including showers

Note: Every building on the YNWA campus will include a security office, storage space, custodial closets, and gender-neutral restrooms.

*conceptual drawing courtesy of
ethereal designs*



*Buildings Five and Six designed
by Luke Stefanchik*

Trades & Medical Buildings

At top, Building Five will house:

- An auto body garage
- A carpentry workshop
- A plumbing workshop
- A welding workshop
- An HVAC workshop

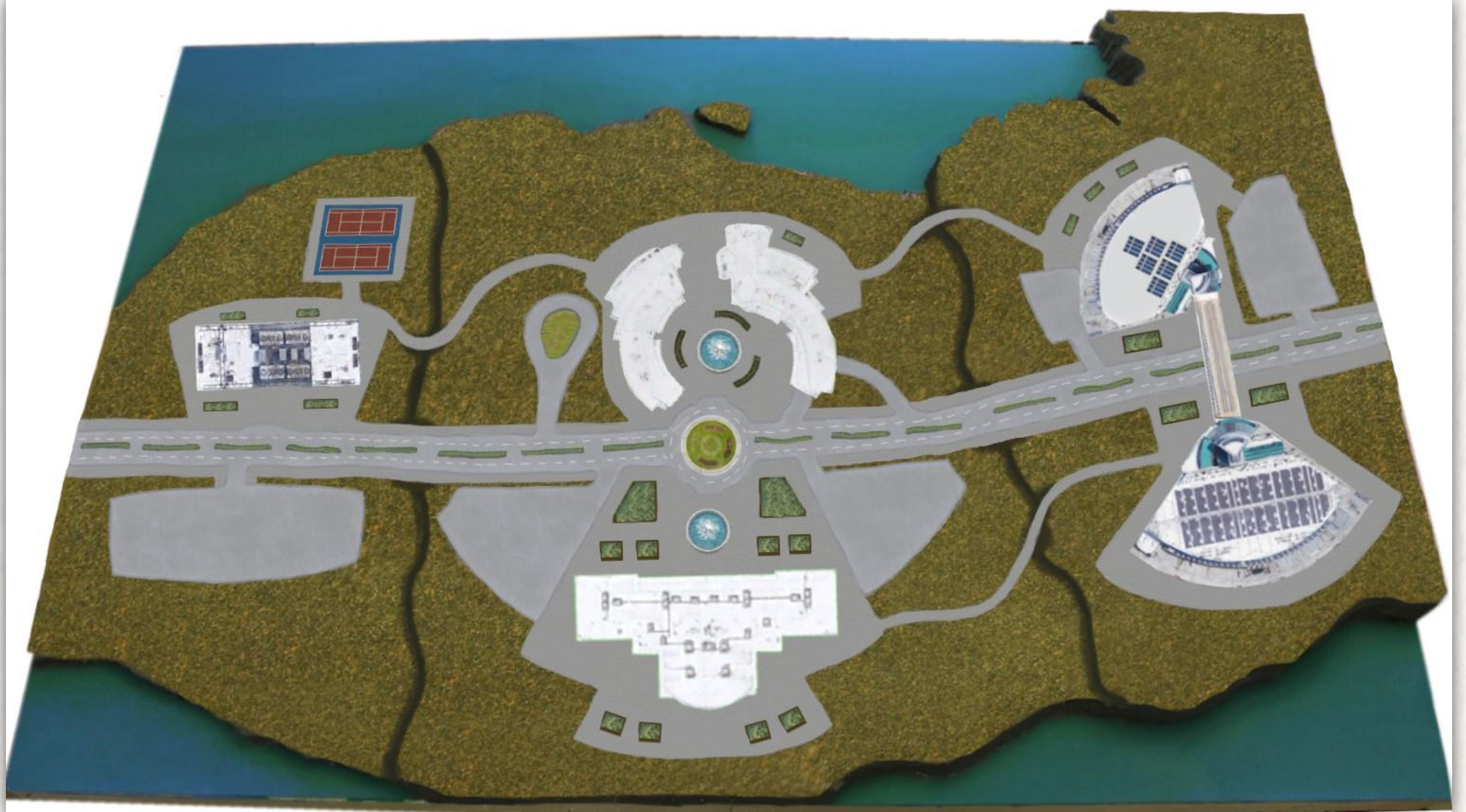
At bottom, Building Six will house:

- A waiting room
- An urgent care facility
- A pharmacy
- A rehabilitation facility
- A cafeteria

Both buildings will be connected via sky bridge over the main thoroughfare.

Note: Every building on the YNWA campus will include a security office, storage space, custodial closets, and gender-neutral restrooms.

Angle One – Top/Plan View

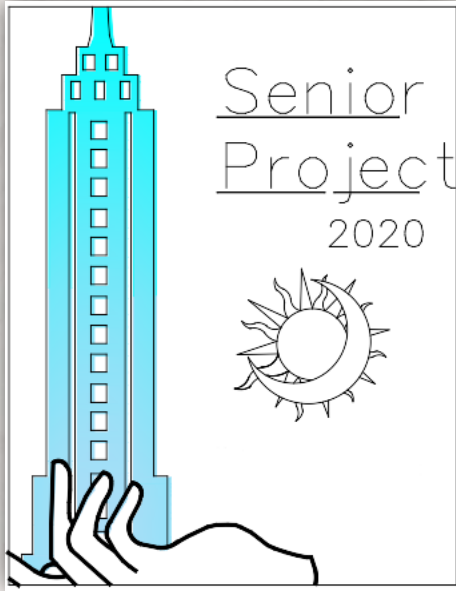


Angle Two – Side View



Angle Three — Front View





Thank You
for viewing
our
presentation!

Works Cited

LGBTQ Statistics

- Human Rights Campaign – hrc.org
- True Colors United – truecolorsunited.org
- Prison Policy Initiative – prisonpolicy.org

Orlando & Warm Weather Statistics

- Orlando Business Journal – bizjournals.com
- Gallup – gallup.com
- Spoon University – spoonuniversity.com

Satellite Images & Directional Information

- Google Earth – google.com/earth
- Google Maps – google.com/maps

UCF Information

- University of Central Florida – ucf.edu